



I. NATIONAL PERFORMANCE MEASURES (NPM)

Delaware's Title V State Action Plan Snapshot • 2020-2025

NPM		2016	2017	2018	2019	2020
NPM 1	Well-Woman Visit¹					
	Percent of women, ages 18–44, with a preventive medical visit in the past year	72.9%	73.0%	78.3%	75.5%	72.5%
NPM 2	Low-Risk Cesarean Delivery²					
	Percent of cesarean deliveries among low-risk first births	24.0%	25.0%	24.4%	24.3%	25.0%
NPM 3	Risk-Appropriate Perinatal Care²					
	Percent of very low birth weight (VLBW) born in a hospital with a Level III + Neonatal Intensive Care Unit (NICU)	82.7%	79.7%	80.3%	86.9%	86.8%
NPM 4	Breastfeeding³					
	A) Percent of infants who are ever breastfed	86.2%	87.1%	86.6%	87.3%	85.5%
	B) Percent of infants breastfed exclusively through 6 months*	16.8%	21.2%	15.5%	20.0%	15.8%
	<small>*Calculated based on length of time in weeks/months woman with a live birth breastfed or pumped breastmilk at the time of the survey (PRAMS Q58)*</small>					
NPM 5	Safe Sleep³					
	A) Percent of infants placed to sleep on their backs	81.1%	81.9%	79.8%	79.9%	80.5%
	B) Percent of infants placed to sleep on a separate approved sleep surface	36.0%	36.1%	38.7%	33.6%	39.7%
	C) Percent of infants placed to sleep without a soft object or loose bedding	50.8%	51.8%	50.1%	53.4%	56.6%

Sources:

1. Delaware Health and Social Services, Division of Public Health, Delaware Behavioral Risk Factor Survey (BRFS), 2016-2020
2. Delaware Health and Social Services, Division of Public Health, Delaware Electronic Vital Records System, 2016-2020
3. Delaware Health and Social Services, Division of Public Health, Delaware Pregnancy Risk Assessment Monitoring System (PRAMS), 2016-2020

NATIONAL PERFORMANCE MEASURES (NPM)

(continued)

NPM		2016	2017	2018	2019	2020
NPM 6	Developmental Screening⁴					
	Percent of children, ages 9 through 36 months, who received a developmental screening using a parent-completed screening tool in the past year	24.8% (2016–2017)	25.5% (2017–2018)	30.3% (2018–2019)	29.1% (2019–2020)	32.1% (2020–2021)
NPM 7	Injury Hospitalization⁵					
7.1	Ages 0 through 9					
	Rate of hospitalization for non-fatal injury per 100,000 children, ages 0 through 9	233.0	183.1	185.7	151.2	184.1
7.2	Ages 10 through 19					
	Rate of hospitalization for non-fatal injury per 100,000 adolescents, ages 10 through 19	335.0	266.9	260.8	307.0	297.0
NPM 8	Physical Activity⁴					
8.1	Ages 6 through 11					
	Percent of children, ages 6 through 11, who are physically active at least 60 minutes per day	29.5%	18.2%	33.0%	26.8%	29.7% (2020–2021)
8.2	Ages 12 through 17					
	Percent of adolescents, ages 12 through 17, who are physically active at least 60 minutes per day	15.5%	12.3%	10.9%	15.2%	16.0% (2020–2021)
NPM 9	Bullying⁴					
	Percent of adolescents, ages 12 through 17, who are bullied	18.9%	26.8%	32.9%	35.3%	23.8% (2020–2021)
	Percent of adolescents, ages 12 through 17, who bully others	6.3%*	5.9% (2016–2017)	12.2%	12.7%	9.8% (2020–2021)

Sources:

4. United States Census Bureau, National Survey of Children's Health (NSCH), 2016–2021

5. Delaware Health and Social Services, Division of Public Health, Inpatient Hospital Discharge Data, 2016–2020



NATIONAL PERFORMANCE MEASURES (NPM)

(continued)

NPM		2016	2017	2018	2019	2020
NPM 10	Adolescent Well-Visit⁴					
	Percent of adolescents, ages 12 through 17, with a preventive medical visit in the past year	89.5%	84.2%	70.2%	75.7%	71.8% (2020–2021)
NPM 11	Medical Home⁴					
	Percent of children with and without special health care needs, ages 0 through 17, who have a medical home					
	Children and Youth with Special Health Care Needs (CYSHCN)	57.4%	46.1%*	45.8%*	35.8%*	38.3% (2020–2021)
	Non-CYSHCN	50.8%	44.9%	46.1%	51.2%	48.4% (2020–2021)
NPM 12	Transition⁴					
	Percent of adolescents with and without special health care needs, ages 12 through 17, who received services necessary to make transitions to adult health care					
	CYSHCN	17.7%	22.4% (2017–2018)	24.0% (2018–2019)	16.6% (2019–2020)	14.4% (2020–2021)
	Non-CYSHCN	11.8%	12.2% (2017–2018)	16.9%	20.9%	13.9% (2020–2021)
NPM 13	Preventive Dental Visit^{3,4}					
13.1	Pregnancy³					
	Percent of women who had a dental visit during pregnancy	43.5%	40.8%	38.5%	41.8%	35.8%
13.2	Child/Adolescent⁴					
	Percent of children, ages 1 through 17, who had a preventive dental visit in the past year	79.9%	83.3%	80.6%	78.8%	77.3% (2020–2021)

Sources:

3. Delaware Health and Social Services, Division of Public Health, Delaware Pregnancy Risk Assessment Monitoring System (PRAMS), 2016-2020

4. United States Census Bureau, National Survey of Children's Health (NSCH), 2016-2021

NATIONAL PERFORMANCE MEASURES (NPM)

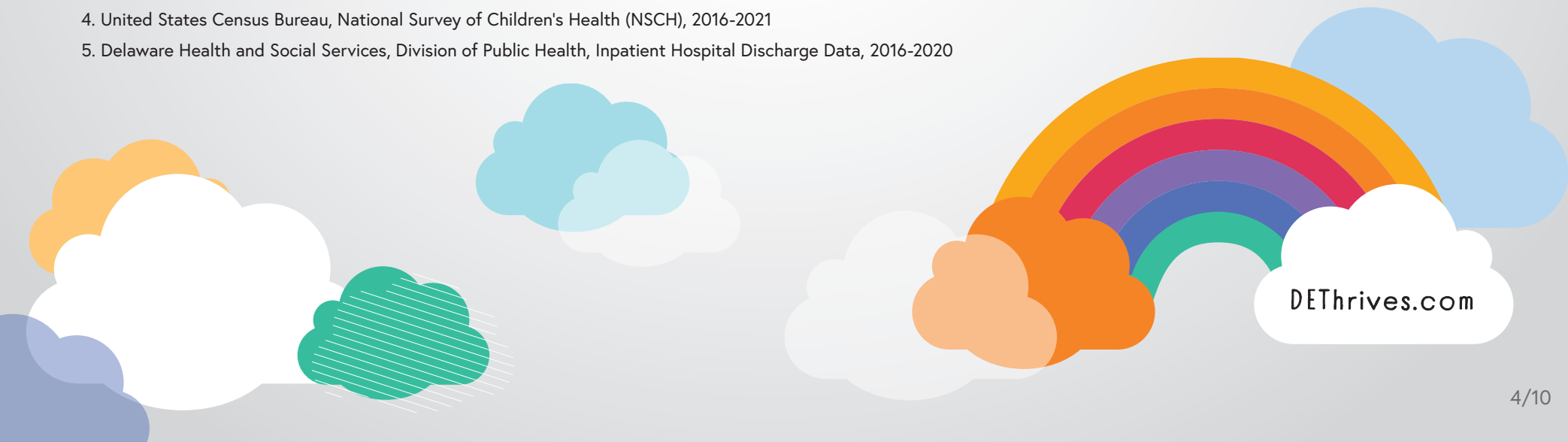
(continued)

NPM		2016	2017	2018	2019	2020
NPM 14	Smoking^{2,4}					
14.1	Pregnancy ²					
	Percent of women who smoke during pregnancy	9.0%	9.0%	8.6%	8.6%	7.0%
14.2	Household ⁴					
	Percent of children, ages 0 through 17, who live in households where someone smokes	19.4%	13.8%	14.3%	16.7%	12.5% (2020–2021)
NPM 15	Adequate Insurance⁴					
	Percent of children, ages 0 through 17, who are continuously and adequately insured	67.9%	72.5%	69.3%	68.0%	68.8% (2020–2021)

*Estimate has a 95% confidence interval width exceeding 20 percentage points or 1.2 times the estimate. The estimate may not be reliable and should be interpreted with caution.

Sources:

1. Delaware Health and Social Services, Division of Public Health, Delaware Behavioral Risk Factor Survey (BRFS), 2016-2020
2. Delaware Health and Social Services, Division of Public Health, Delaware Electronic Vital Records System, 2016-2020
3. Delaware Health and Social Services, Division of Public Health, Delaware Pregnancy Risk Assessment Monitoring System (PRAMS), 2016-2020
4. United States Census Bureau, National Survey of Children's Health (NSCH), 2016-2021
5. Delaware Health and Social Services, Division of Public Health, Inpatient Hospital Discharge Data, 2016-2020





II. NATIONAL OUTCOME MEASURES (NOM)

Delaware's Title V State Action Plan Snapshot • 2020-2025



NOM		2016	2017	2018	2019	2020
NOM 1	Early Prenatal Care¹					
	Percent of pregnant women who receive prenatal care beginning in the first trimester	75.6%	76.3%	74.9%	73.6%	76.0%
NOM 2	Severe Maternal Morbidity²					
	Rate of severe maternal morbidity per 10,000 delivery hospitalizations (Delaware indicator changed to 10,000)* updated to reflect SMM w/o blood transfusion	60.3	49.5	59.8	70.8	68.3
NOM 3	Maternal Mortality³					
	Maternal mortality rate per 100,000 live births (6-year average rate, 2015-2020)*					17.1
NOM 4	Low Birth Weight¹					
	Percent of low birth weight deliveries (<2,500 grams)	9.0%	9.1%	8.9%	9.4%	9.0%
NOM 5	Preterm Birth¹					
	Percent of preterm births (<37 weeks)	10.0%	10.2%	9.6%	10.7%	10.3%
NOM 6	Early Term Birth¹					
	Percent of early term births (37-38 weeks)	24.2%	25.4%	27.7%	29.2%	30.3%
NOM 7	Early Elective Delivery¹					
	Percent of nonmedically indicated early elective deliveries (NMETD)*	8.1%	9.2%	9.5%	9.7%	10.6%

Sources:

1. Delaware Health and Social Services, Division of Public Health, Delaware Electronic Vital Records System, 2016-2020
2. Delaware Health and Social Services, Division of Public Health, Inpatient Hospital Discharge Data, 2016-2020
3. Delaware Courts, Child Death Review Commission (CDRC), 2016-2020



NATIONAL OUTCOME MEASURES (NOM)

(continued)



NOM		2016	2017	2018	2019	2020
NOM 8	Perinatal Mortality¹					
	Perinatal mortality rate per 1,000 live births plus fetal deaths	6.3	6.5	6.8	7.1	6.6
NOM 9						
9.1	Infant Mortality ¹					
	Infant mortality rate per 1,000 live births	7.9	6.6	5.9	6.6	5.4
9.2	Neonatal Mortality ¹					
	Neonatal mortality rate per 1,000 live births	5.2	4.4	4.1	4.5	3.5
9.3	Postneonatal Mortality ¹					
	Postneonatal mortality rate per 1,000 live births	2.7	2.2	1.8	2.1	1.9
9.4	Preterm-Related Mortality ¹					
	Preterm-related mortality rate per 1,000 live births	3.9	2.6	2.0	2.9	1.9
9.5	SUID Mortality ¹					
	Sleep-related Sudden Unexpected Infant Death (SUID) rate per 1,000 live births	1.1	1.0	0.9	1.1	0.9
NOM 10	Drinking During Pregnancy⁴					
	Percent of infants born with fetal alcohol exposure in the last 3 months of pregnancy	6.2%	6.4%	6.4%	6.8%	5.8%
NOM 11	Neonatal Abstinence Syndrome⁵					
	The rate of infants born with neonatal abstinence syndrome per 1,000 hospital births	27.6	26.1	23.1	19.7	19.6

Sources:

1. Delaware Health and Social Services, Division of Public Health, Delaware Electronic Vital Records System, 2016–2020

4. Delaware Health and Social Services, Division of Public Health, Delaware Pregnancy Risk Assessment Monitoring System (PRAMS), 2016–2020

5. Delaware Health and Social Services, Division of Public Health, Inpatient Hospital Discharge Data, 2016–2020



NATIONAL OUTCOME MEASURES (NOM)

(continued)

NOM		2016	2017	2018	2019	2020
NOM 12	Newborn Screening Timely Follow-Up⁶					
	Percent of eligible newborns screened for heritable disorders with on-time physician notification for out-of-range screens who are followed up in a timely manner			99.8%	99.2%	99.9%
NOM 13	School Readiness					
	Percent of children meeting the criteria developed for school readiness					
NOM 14	Tooth decay or cavities⁷					
	Percent of children, ages 1 through 17, who have decayed teeth or cavities in the past year	11.7%	10.2%	11.3%	15.3%	12.5% (2020–2021)
NOM 15	Child Mortality¹					
	Child mortality rate, ages 1 through 9, per 100,000 population	14.8	14.8	23.8	25.9	8.9
NOM 16						
16.1	Adolescent Mortality ¹					
	Adolescent mortality rate, ages 10 through 19, per 100,000 population	31.8	24.8	32.3	24.5	30.1
16.2	Adolescent Motor Vehicle Death ^{1**}					
	Adolescent motor vehicle mortality rate, ages 15 through 19, per 100,000 population	5.1	8.5	11.9	8.5	11.3
16.3	Adolescent Suicide ^{1**}					
	Adolescent suicide rate, ages 15 through 19, per 100,000 population	6.8	5.1	8.5	5.1	6.4

Sources:

1. Delaware Health and Social Services, Division of Public Health, Delaware Electronic Vital Records System, 2016–2020

6. Delaware Health and Social Services, Division of Public Health, Delaware Newborn Screening Program, 2016–2020

7. United States Census Bureau, National Survey of Children's Health (NSCH), 2016–2020

NATIONAL OUTCOME MEASURES (NOM)

(continued)

NOM		2016	2017	2018	2019	2020
NOM 17						
17.1	Children with Special Health Care Needs (CSHCN) ⁷					
	Percent of children with special health care needs, ages 0 through 17	22.9%	23.2%	21.3%	21.6%	21.1% (2020–2021)
17.2	CSHCN Systems of Care ⁷					
	Percent of children with special health care needs, ages 0 through 17, who received care in a well-functioning system	18.5%	18.1%	15.7% (2018–2019)	11.9%	12.6% (2020–2021)
17.3	Autism ⁷					
	Percent of children, ages 3 through 17, diagnosed with an autism spectrum disorder	3.1%	3.9% (2017–2018)	4.0% (2018–2019)	4.4% (2019–2020)	2.8% (2020–2021)
17.4	Attention Deficit Disorder/Attention Deficit Hyperactivity Disorder (ADD or ADHD) ⁷					
	Percent of children, ages 3 through 17, diagnosed with ADD/ADHD	12.0%	9.4%	11.3%	11.8%	9.1% (2020–2021)
NOM 18 Mental health treatment⁷						
	Percent of children, ages 3 through 17, with a mental/behavioral condition who receive treatment or counseling	69.5%***	56.7%*** (2017–2018)	54.6%*** (2018–2019)	49.7%*** (2019–2020)	47.2%*** (2020–2021)
NOM 19 Overall health status⁷						
	Percent of children, ages 0 through 17, in excellent or very good health	91.1%	89.5%	90.1%	88.8%	89.8% (2020–2021)
NOM 20 Obesity⁷						
	Percent of children, ages 2 through 4, and adolescents ages 10 through 17, who are obese (BMI at or above the 95th percentile)	16.8%	16.5%	13.4%	18.4%	16.8% (2020–2021)

Source:⁷ United States Census Bureau, National Survey of Children's Health (NSCH), 2016–2020

Sources:

7. United States Census Bureau, National Survey of Children's Health (NSCH), 2016–2020

NATIONAL OUTCOME MEASURES (NOM)

(continued)



NOM		2016	2017	2018	2019	2020
NOM 21	Uninsured⁸					
	Percent of children, ages 0 through 17, without health insurance	4.1%	4.3%	4.1%	3.8%	3.9%
NOM 22						
22.1	Child Vaccination ⁹					
	Percent of children who have completed the combined 7-vaccine series by age 24 months.	78.1%	77.1%	73.7%	80.9%	
22.2	Flu Vaccination ⁹					
	Percent of children, 6 months through 17 years, who are vaccinated annually against seasonal influenza	65.4% (2016–2017)	66.8% (2017–2018)	65.7% (2018–2019)	68.2% (2019–2020)	61.9% (2020–2021)
22.3	HPV Vaccination ^{9****}					
	Percent of adolescents, ages 13 through 17, who have received at least one dose of the HPV vaccine	56.9%	58.1%	58.4%	59.2%	63.2%
22.4	Tdap Vaccination ⁹					
	Percent of adolescents, ages 13 through 17, who have received at least one dose of the Tdap vaccine	87.5%	89.6%	89.1%	89.7%	85.4%
22.5	Meningitis Vaccination ⁹					
	Percent of adolescents, ages 13 through 17, who have received at least one dose of the meningococcal conjugate vaccine	87.3%	90.5%	85.9%	89.0%	89.8%
NOM 23	Teen Births¹					
	Teen birth rate, ages 15 through 19, per 1,000 females	20.2	19.2	17.3	15.2	14.1

Sources:

1. Delaware Health and Social Services, Division of Public Health, Delaware Electronic Vital Records System, 2016–2020

8. United States Census Bureau, American Community Survey (ACS), 2016–2020

9. National Center for Immunization and Respiratory Diseases, Immunization Services Division, National Immunization Survey (NIS), 2016–2020

NATIONAL OUTCOME MEASURES (NOM)

(continued)

NOM	2016	2017	2018	2019	2020
NOM 24 Postpartum Depression⁴					
Percent of women who experience postpartum depressive symptoms following a recent live birth	10.5%	11.7%	13.1%	10.4%	10.6%
NOM 25 Forgone Health Care⁷					
Percent of children, ages 0 through 17, who were not able to obtain needed health care in the last year	2.6%***	3.1% (2017–2018)	2.5% (2018–2019)	2.9% (2019–2020)	2.7% (2020–2021)

*The indicator is for all hospital births. NMETD is singleton births at 37 and 38 weeks of gestation with cephalic presentation to nulliparous women that exclude preterm births and conditions such as preeclampsia, eclampsia, chorioamnionitis, premature rupture of membranes, prolonged labor, pre-pregnancy diabetes, gestational diabetes, congenital anomalies, fetal distress, and history of previous poor outcomes, and all early-term (37 and 38 weeks of gestation) singleton hospital births serve as the denominator.

**Delaware single-year rates are based on counts less than 10 and are highly unstable.

***Estimate has a 95% confidence interval width exceeding 20 percentage points or 1.2 times the estimate. The estimate may not be reliable and should be interpreted with caution.

****These estimates are revised to include males and females.

All Sources Cited in Table:

1. Delaware Health and Social Services, Division of Public Health, Delaware Electronic Vital Records System, 2016–2020
2. Delaware Health and Social Services, Division of Public Health, Inpatient Hospital Discharge Data, 2016–2020
3. Delaware Courts, Child Death Review Commission (CDRC), 2016–2020
4. Delaware Health and Social Services, Division of Public Health, Delaware Pregnancy Risk Assessment Monitoring System (PRAMS), 2016–2020
5. Delaware Health and Social Services, Division of Public Health, Inpatient Hospital Discharge Data, 2016–2020
6. Delaware Health and Social Services, Division of Public Health, Delaware Newborn Screening Program, 2016–2020
7. United States Census Bureau, National Survey of Children's Health (NSCH), 2016–2020
8. United States Census Bureau, American Community Survey (ACS), 2016–2020
9. National Center for Immunization and Respiratory Diseases, Immunization Services Division, National Immunization Survey (NIS), 2016–2020

