



Delaware Healthy Mother & Infant Consortium (DHMIC)

*Governor-Appointed
Member Nominations Process*

Table of Contents

- DHMIC Mission Statement
- DHMIC Structure
- Roles, Responsibilities, and Expectations
- Application Process
- Promotional Efforts





DHMIC Mission Statement

DHMIC Mission

The Delaware Healthy Mother & Infant Consortium (DHMIC) provides statewide leadership to prevent infant and maternal mortality and to improve the health of women of childbearing age and infants in Delaware, guided by the 2005 Infant Mortality Task Force recommendations and future state and legislative priorities.

dethrives.com/dhmic



DHMIC's Current Mission



DHMIC Structure

Qualifications & Appointment

For Appointed members:

- A DHMIC Membership Committee established by the Chair and Vice Chair to nominate individuals for the Governor's review and consideration. Individuals must submit a nomination packet for review.

For Committee Chairs:

- DHMIC appointees serve as Committee Chairs and Vice Chairs can be either DHMIC appointees or community members. The DHMIC Chair appoints both Committee Chairs and Vice Chairs.

For Committee members:

- DHMIC welcomes all people interested in DHMIC work through workgroups and committees. Individuals must submit an application for approval by the Committee Chairs and complete an orientation.

Note: This slide deck focuses on the Appointed member process.

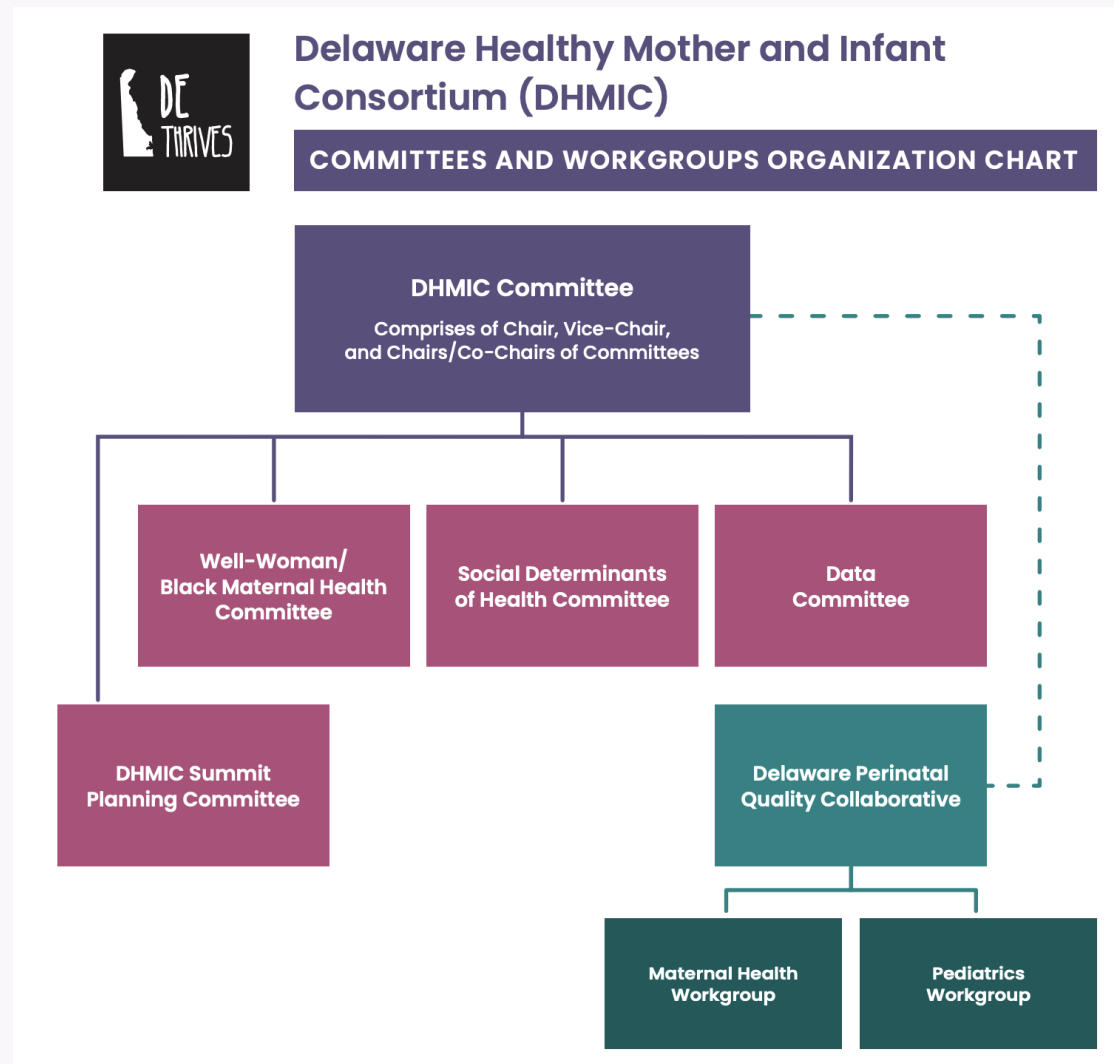
DHMIC Appointed Membership Constitution

Membership Constitution

- Two (2) representatives of the Delaware House of Representatives and two (2) representatives of the Delaware State Senate (each caucus selects one member for each chamber)
- One (1) representative of the Governor's office
- The Secretary of the Department of Children, Youth & Their Families, or the Secretary's designee
- The Secretary of the Department of Health and Social Services, or the Secretary's designee
- The Director of the Division of Medicaid and Medical Assistance or the Director's designee
- Fifteen (15) additional members approved by the Governor who shall represent the medical, social service, and professional communities as well as the general public

<https://legis.delaware.gov/json/BillDetail/GetHtmlDocument?fileAttachmentId=30887>

DHMIC Structure



How Committees and Workgroups Help to Meet DHMIC Objectives

- Member meetings **address goals and objectives** at a granular/community/neighborhood level.
- Action is determined based on any particular goal, data collected, and policy review to be reached.
- Committee Chairs report back to the **Executive Committee and update the DHMIC** on progress/recommendations determined.
- Overarching decision is reached on how to move forward, whether it be policy change, community engagement, or **any combination of actions** that will achieve the desired result.

<https://dethrives.com/dhmic#committees-and-workgroups>

The background is a solid teal color. Scattered across the top half are several white, four-pointed starburst shapes of varying sizes. In the lower half, there are two overlapping white cloud-like shapes. The text is centered within these clouds.

DHMIC Member Roles, Responsibilities, & Expectations

DHMIC Member Roles & Responsibilities

- **Advocate** for progressive public policies to improve maternal and infant health.
- **Collaborate** with state agencies, health providers, and communities to implement strategic recommendations and reduce disparities.
- **Support** the development of a comprehensive and coordinated system of care across preconception, prenatal, and postnatal stages.
- **Contribute** to the planning and execution of education, outreach, transportation, and service-delivery efforts that improve health outcomes.
- **Evaluate** progress on DHMIC goals, using data and member feedback to recommend and refine strategies.

DHMIC Member Expectations

- **Attend at least four** public DHMIC meetings annually.
- **Consistently attend meetings**, as non-participation may result in removal upon recommendation of the Membership Committee and a two-thirds vote. **Notify the Chair** if you're unable to attend a meeting.
- **Attend** closed meetings and other meetings as called by the Chair.
- **Participate** in voting and decision-making processes during all meetings.
- Members may be invited to **serve on or lead** DHMIC Committees or workgroups to advance specific initiatives.
- Appointed members are **asked to serve** as Committee Co-Chairs.

DHMIC Member Expectations

- **Actively participate** in committee and workgroup meetings, as applicable.
- **Attend** the DHMIC Annual Summit.
- **Be informed about and comply** with the State Code of Conduct.
- **Bring forward new ideas** via committees or the Executive Committee.
- **Support efforts** to eliminate health disparities and integrate culturally responsive practices.

2026 Meeting & Program Dates

Quarterly Meetings:

Del Tech Terry Campus

Tuesday, January 13

Thursday, May 21

Wednesday, September 30

Wednesday, December 2

Annual Summit:

Chase Center on the Riverfront

Monday, April 13

The Dec. 2 Quarterly Meeting will be a combined closed session for DHMIC Members and a full DHMIC Quarterly Meeting open to the public.

The background is a solid pink color. There are two large, white, stylized clouds. One cloud is on the left, and the other is on the right, partially overlapping the first. There are several white, four-pointed stars of varying sizes scattered across the pink background.

Application Process

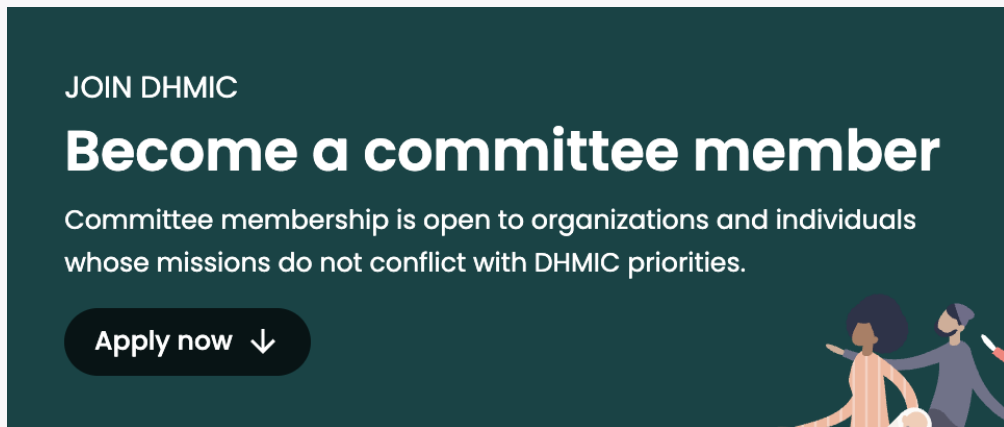
Application Process

Per bylaws, 15 additional permanent members shall be appointed by the Governor and shall represent the medical, social service, and professional communities as well as the general public. Members will include consumers. The Consortium will submit recommendations to the Governor for appointment.



Application Process

- All interested candidates can complete a new member form online to self-nominate or nominate a candidate. The form is available at DEThrives.com/dhmic/become-a-member.
- Candidates complete and submit a new member form. You can upload a CV/resume with the online form.



MEMBERSHIP APPLICATION

Are you applying yourself or are you nominating somebody else?

☐ Applying Myself ☐ Nominating Somebody

Committee membership is open to organizations and individuals whose missions do not conflict with the Delaware Healthy Mother and Infant Consortium.

Application Process

- The Membership Committee reviews the applications and CVs/resumes. The Committee then shares its recommendations with DHMIC.
- The Delaware Division of Public Health (DPH) facilitates the recommendations and works directly with the Governor's Boards and Commissions office.
- The Governor reviews and may approve or deny recommendations.
- Letters of appointments are shared with DPH. Welcome letters are signed by the Chair and sent to the new member.
- Membership engagement and onboarding ensues. Orientation meetings are set up and led by the Chair and Vice Chair.
- Note: Applications are reviewed on a rolling basis with recommendations made when there are open appointment seats (vacancies)

Member Positions

1. Two representatives of the Delaware House of Representatives and two representatives of the Delaware State Senate.
2. One representative of the Governor's office.
3. The Secretary of the Department of Children, Youth & Their Families, or the Secretary's designee.
4. The Secretary of the Department of Health and Social Services, or the Secretary's designee.
5. The Director of the Division of Medicaid and Medical Assistance or the Director's designee.
- 6. Fifteen additional members approved by the Governor who shall represent the medical, social service, and professional communities as well as the general public.**

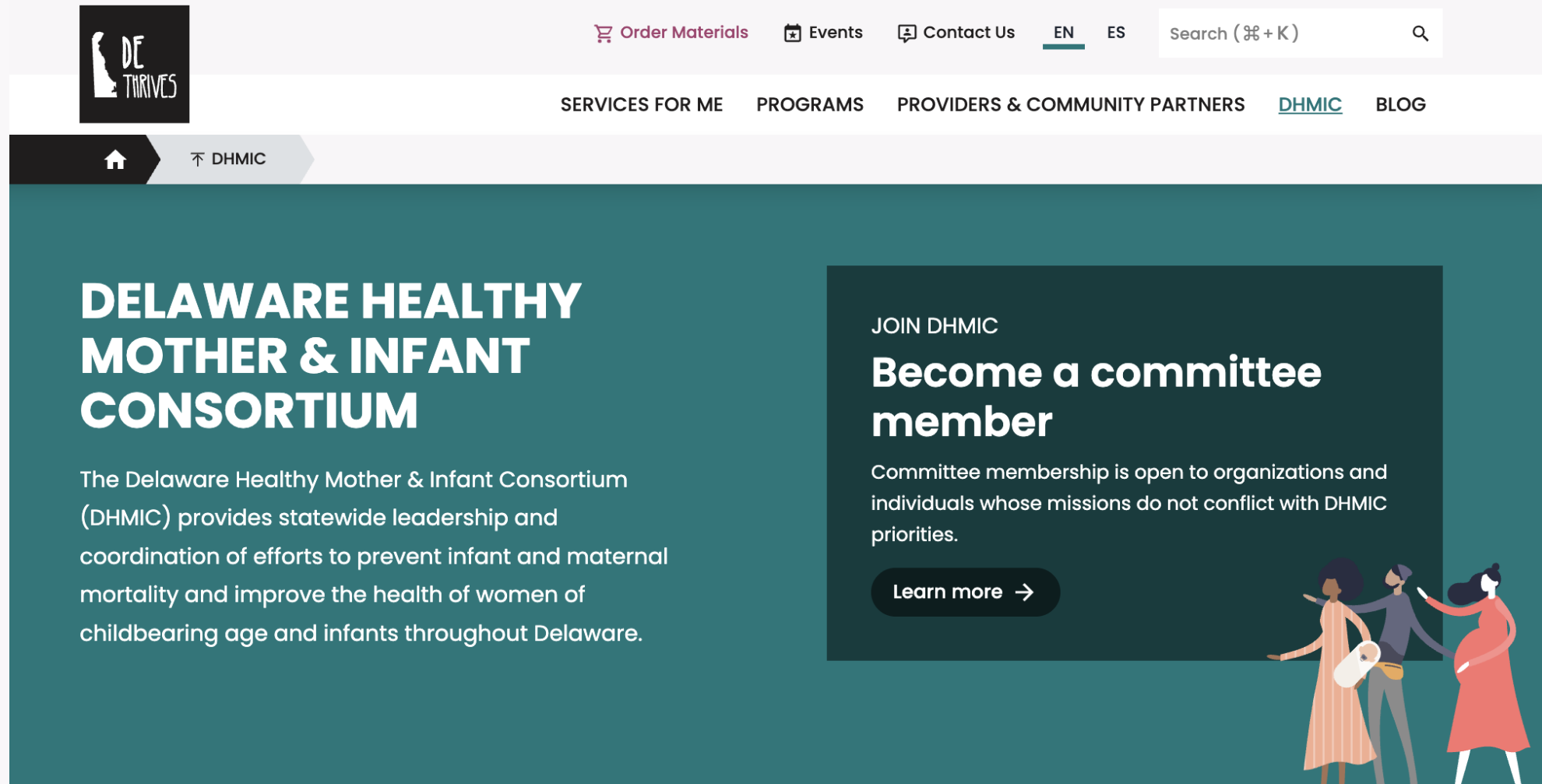
Appointment & Terms

- Terms are three years, with staggered expiration to ensure continuity.
- Appointed members may be recommended for reappointment or replaced if vacancies arise.
- Appointed members may be invited to serve on or lead DHMIC committees or workgroups to advance specific initiatives.



Promotional Efforts

New Landing Page



Promotional Efforts

New Member Nomination

New member nomination application process will be done through:

- Organic social
- Paid social
- Partner outreach



DE
THRIVES



DELAWARE
HEALTHY MOTHER
& INFANT
CONSORTIUM